



In This Issue:

BERARD
SINCE 1945

The Mega Transport Experts

- ▶ Load Out | Pipeway Crossover Load Out
- ▶ A Look Back To 2010 | Massive Module Load Outs
- ▶ Show Reports | Workboat & ABC Conference
- ▶ Happy New Year From The Berard Team!

Load Out Pipeway Crossover Load Out



Job Specs

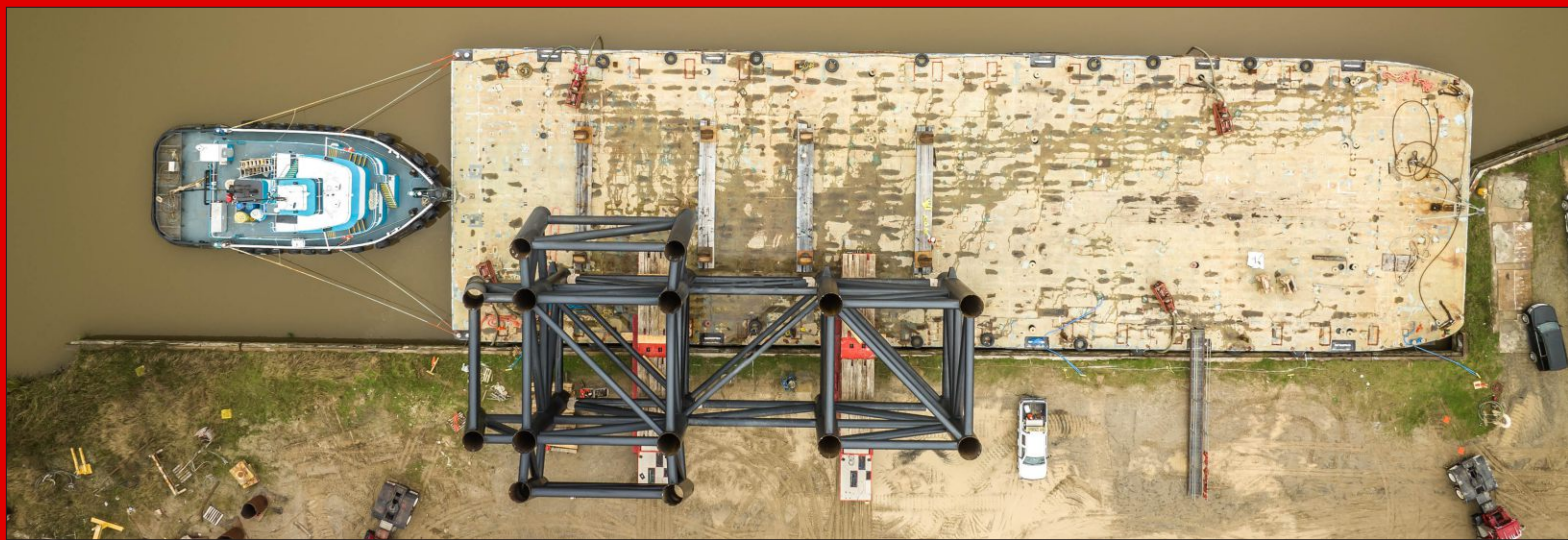
Weight:
450,400 Lbs.

Dimensions:
113'L x 66'W

Equipment Used: 20 axle lines of SPMTs, 2 power packs, barge ramps and winch trucks

Load outs are a common occurrence for the Berard team. This one was another one of those. The team was commissioned to load out two pipeway crossover structures for a South Louisiana fabricator weighing 450,400 lbs. each. The fabrication client utilized two heavy lift crawler cranes to lift the structures so that Berard operators could position the SPMTs underneath and take the load. Then it was off to the bulkhead where the team would commence loading operations. A side load operation was used to get the two structures onto the barge and into position for sea-fastening for transit to the final location. The team performed with great care and with safety always in mind to make this one of the last load outs in 2022.





A Look Back To 2010 Massive Module Load Outs



Job Specs

Weight:

4,000 & 3,200 Tons

Dimensions:

165'L x 90'W x 70'H

150'L x 87'W x 70'H

Equipment Used:

144 axle lines of SPMTs,
(2) 400' deck barges,
barge ramps, ballast
pumps and winch trucks

We go back to 2010 when the team was commissioned to load out two modules weighing 4000 and 3200 tons. The 165'L x 90'W x 70'H and 150'L x 87'W x 70'H modules were destined to become part of the Nikaitchuq Development Project in Prudhoe Bay Alaska.

The modules were transported through the fabrication yard using 144 lines of SPMTs and involved several tight maneuvers to pass the enormous loads between obstacles and a ninety degree turn to begin the load out onto two 400' long deck barges. The job was performed safely, on time and on budget making for yet another successful project completion by the Berard Team.



Show Reports International Workboat Show & ABC Conference



Another Workboat show in the books! The team exhibited at the 2022 International Workboat Show 2022 in New Orleans, Louisiana. The annual event was held from November 30th to December 2nd. The show was well attended this year and our team had a great time visiting with existing clients as well as many future ones.

The team also exhibited at the International Accelerated Bridge Construction Conference 2022 in Miami, Florida. The show was a great mix of seminars and show floor activity. Our team met with many industry professionals and they enjoyed learning all about our company and how Berard can help their projects with our heavy lift and transport solutions.





HAPPY NEW YEAR!

The Berard team wishes everyone of our team members, their families, and our great clients a Happy & Prosperous New Year! Our company had a blessed 2022 and as we look forward, we will continue the course, all thanks to our dedicated and talented team who make us who we are. Here's to a great 2022, and an even better 2023!

> Birthdays @ Berard

Happy Birthday!

Happy Birthday to These Dedicated Team Members!

Bernie Broussard
Quincy Broussard
Hunter Freyou
Hubert Landry
Wilson "Bam" Lewis

Avery Munson
Justin Salter
Justin Thibodeaux
Jenny Berard
Morgan Berard